




The next Strategic Plan

Looking ahead
to 2040



Fostering Educational Equity through Multi-tiered Systems of Support

Current Strategic Plan

PRIORITY ONE

Fostering Student Growth, Leadership & Achievement

PRIORITY TWO

Fostering Staff Growth, Leadership & Collective Efficacy

PRIORITY THREE

Fostering School Community and Connectedness

PRIORITY FOUR

Fostering Operational Systems that Support Effective Schools

Fostering Educational Equity through Multi-tiered Systems of Support

LGSD Strategic Plan

PRIORITY ONE

Fostering Student Growth, Leadership & Achievement

PRIORITY TWO

Fostering Staff Growth, Leadership & Collective Efficacy

PRIORITY THREE

Fostering School Community and Connectedness

PRIORITY FOUR

Fostering Operational Systems that Support Effective Schools

2025-26 is the last year of our current Strategic Plan

We will engage in a two-year Strategic Plan revision process

Year 1 (2025-26)
Reflect on current Strategic Plan

Year 2 (2026-27)
Draft new Strategic Plan

MISSION

- The Lemon Grove Learner is diverse, unique, resilient, inquisitive, compassionate, and limitless.
- We believe that caring relationships based on integrity, honesty, and respect for diversity are essential to learning.
- When our Lemon Grove Learners leave Lemon Grove School District they will know and be able to recognize their significance and potential, and they will use their 21st-century learning experiences to thrive as tomorrow's leaders, workers, and democratic citizens.

VISION

**LEMON GROVE LEARNERS
ARE TOMORROW'S LEADERS,
WORKERS, AND CITIZENS**





Guiding Questions for the Year:

- What does it mean to be tomorrow's leaders, workers and citizens?
- What knowledge, skills and mindsets will students need to be successful?
- How will we prepare students to thrive as tomorrow's leaders, workers & citizens?



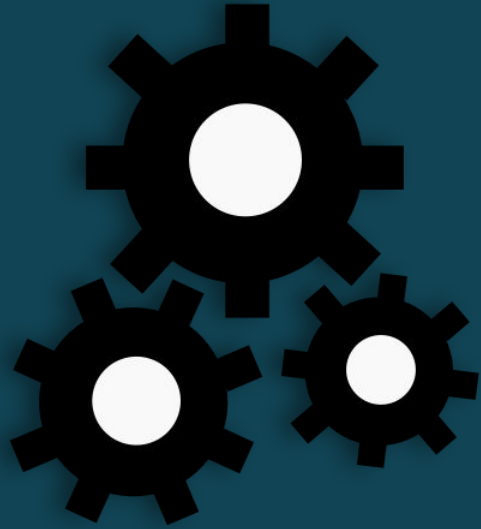
Vision 2040



Guiding Question:

- What knowledge, skills and mindsets will students need to be successful in 2040?





Systems

When a flower doesn't
bloom you fix the
environment in which
it grows, not the flower.

Alexander Den Heijer
www.stevemaraboli.com



San Diego County Office of Education

STRATEGIC PLAN

2025–30



san diego county office of
EDUCATION
FUTURE WITHOUT BOUNDARIES™



Safety

Join our Team!



The Year Our Current Schools Were Built



Lemon Grove Middle: 1938

Lemon Grove Academy Elem: 1944

Vista La Mesa Academy: 1948

Monterey Heights: 1949

San Miguel: 1951

Palm Campus: 1957

San Altos: 1958

Mount Vernon: 1961

Early Childhood Education Center: 2025



Facilities for the Future



In 2024, our community overwhelmingly supported Measure CC and Measure EE to invest in Lemon Grove schools. This year, the District delivered on that commitment by issuing the first series of bonds (Series A) for both measures. The District also continued progress on the 2022 Measure Q by issuing its final series (Series B) for the completion of the new Early Childhood Education Center.

Together, these actions reflect our community's trust and our shared commitment to safe, modern, and welcoming schools. As a reminder, EVERY Bond dollar stays in Lemon Grove and cannot be taken by the State of California.

What This Means for Homeowners

In October 2024 your annual property tax invoice shows 6 separate voter-approved Bond related line items at approximately \$64 per \$100k Assessed Value.

- | | |
|----------------------------------|---------------------------------------|
| 1. 1998 Election, Proposition LL | 4. 2014 Election, Proposition R |
| 2. 2008 Election, Proposition W | 5. 2014 Election, Proposition R |
| 3. 2008 Election, Proposition W | 6. 2022 Election, Measure Q, Series A |

In October 2025 your annual property tax invoice will show 9 separate voter-approved Bond related line items at approximately \$144 per \$100k Assessed Value. An increase of \$80 per \$100k.

- | | |
|----------------------------------|--|
| 1. 1998 Election, Proposition LL | 6. 2022 Election, Measure Q, Series A |
| 2. 2008 Election, Proposition W | 7. 2022 Election, Measure Q, Series B |
| 3. 2008 Election, Proposition W | 8. 2024 Election, Measure CC, Series A |
| 4. 2014 Election, Proposition R | 9. 2024 Election, Measure EE, Series A |
| 5. 2014 Election, Proposition R | |

Example: For a \$300,000 home, the property tax increase equates to \$240/year or \$20/month.



Why Your Investment Matters



Bond dollars fund:

- Safe and modern classrooms for students
- Upgraded facilities that support student learning
- Stronger neighborhood schools as the heart of the community

Every Bond dollar is monitored for transparency and accountability:

- Independent Citizens' Oversight Committee
- Annual financial and performance audits
- Clear reporting to the community and District Board of Trustees

Recent Facility Projects



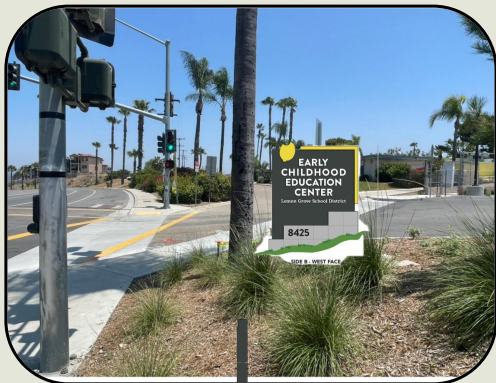
LEMON GROVE
ACADEMY ELEMENTARY



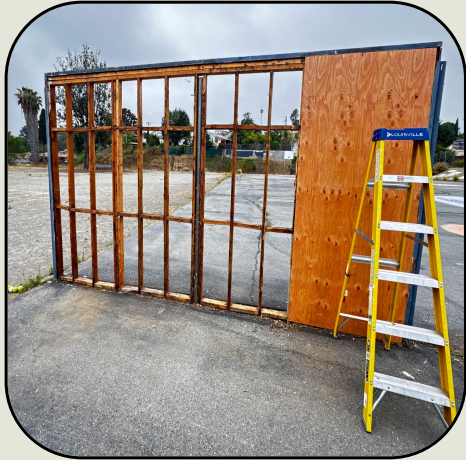
MONTEREY HEIGHTS
STEAM ACADEMY



Recent Facility Projects



Recent Facility Projects



Upcoming Bond Projects

- Recreation Center Restroom Refresh Project **Joint Project with the City*
- Roof Replacement Districtwide
- Asphalt Replacement Districtwide
- Field Upgrades Districtwide
- External Painting Districtwide
- Updated Gates and Fencing Districtwide
- Doorbell System for Front Office Entry Districtwide
- Camera Surveillance System Districtwide



The background is a dark chalkboard with various white chalk sketches. In the top left, there's a large letter 'V'. Below it is a telescope. To the right of the telescope is a globe showing continents. In the bottom left, there's a stack of books. In the bottom center, there's an open book with some writing. In the bottom right, there's a large percentage sign and some other symbols.

Thank You!

#bettertogether